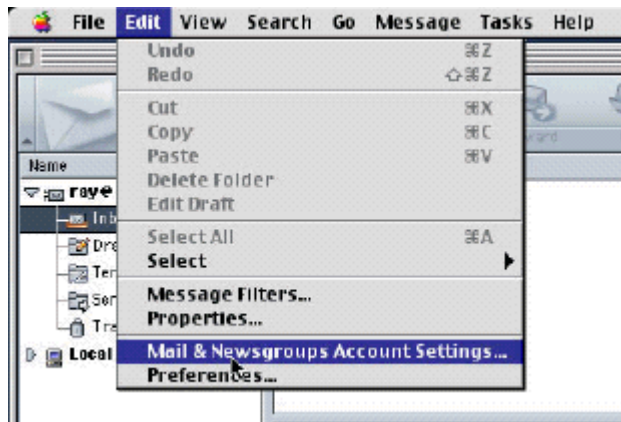
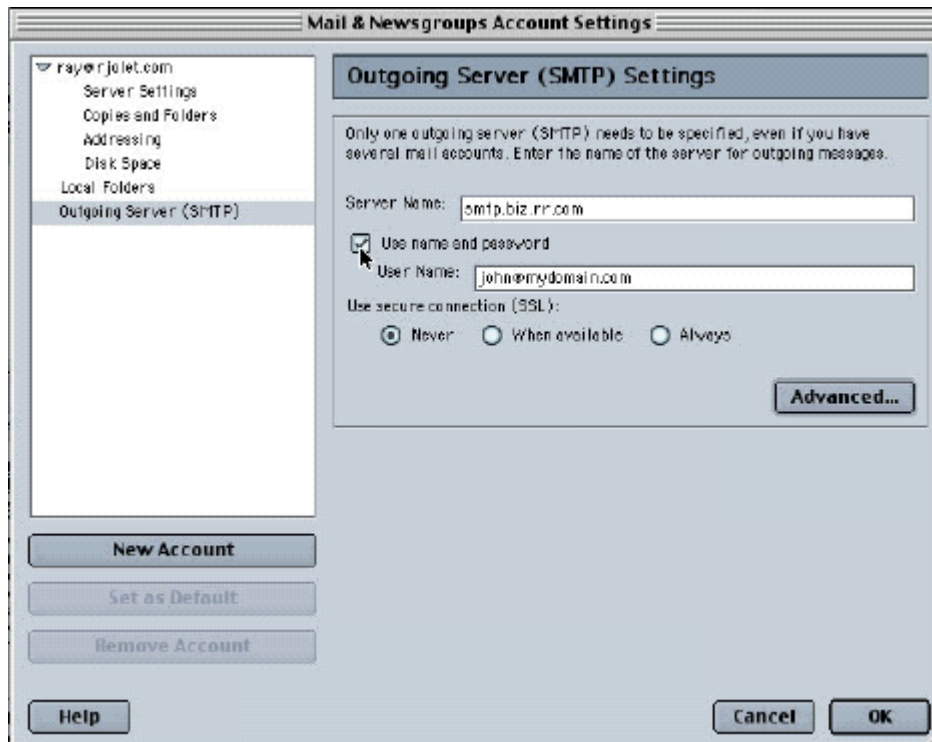


## Netscape - MAC - SMTP Authentication Configuration

1. Select **Mail & Newsgroups Account Settings** from the **Edit** menu.



2. Select **Outgoing Server** from the left navigation bar in the Mail & Newsgroups Account Settings window.
3. Check the box next to **Use Name and password**.



4. Enter your complete e-mail address in the **User Name** field.
5. Click the **OK** button.