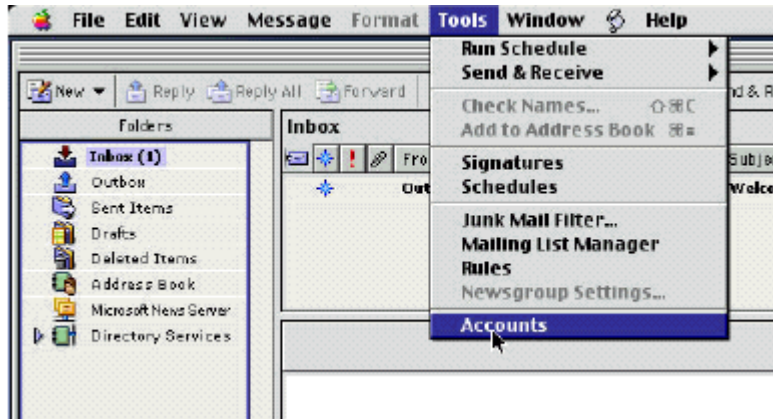
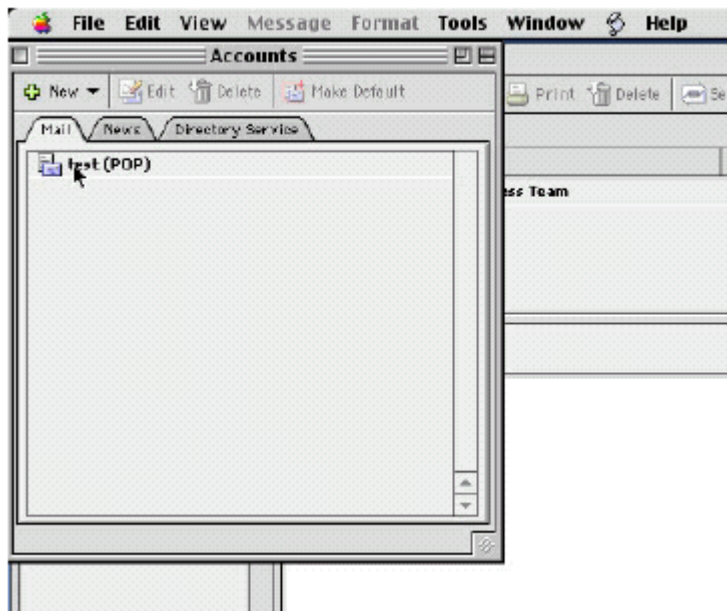


Outlook Express - MAC - SMTP Authentication Configuration

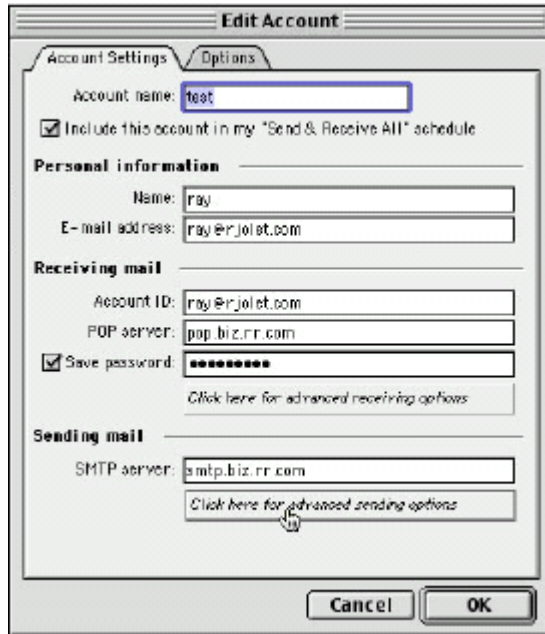
1. Select **Accounts** from the **Tools** menu.



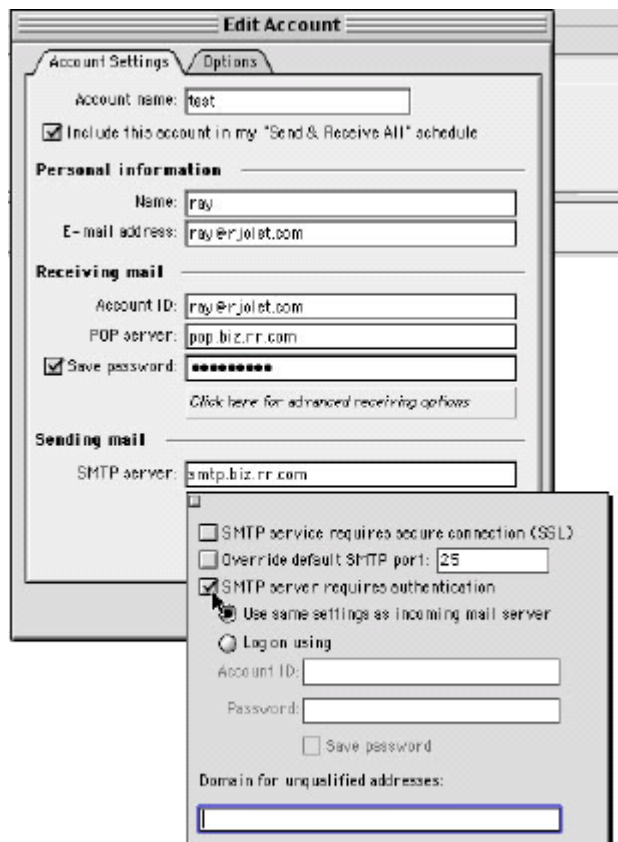
2. Click on the default mail account to select it. This should be the commercial mail account.



3. Click the **Click here for advanced sending options** button.



4. Check the box next to **SMTP server requires authentication**.



5. Select **Use same settings as incoming mail server**.
6. Click the **OK** button.