

Configuring and Using WSFTP

This page describes how to configure and use WSFTP to upload files to your web site. For general information about FTP including answers to common questions, please see [our FTP page](#).

- [Download WS_FTP for Windows](#)
- [Download WinZip](#) (To uncompress downloaded .zip files.)

When you run WS_FTP the Session Profile window is displayed. A profile contains the information needed to connect to your web site. Creating a once eliminates the need for you to configure the software each time you use it. To create a new profile, click the "New" button and enter a generic profile name at the top of the Session Profile window. Next, enter the userid, password and hostname for your web site as illustrated below.

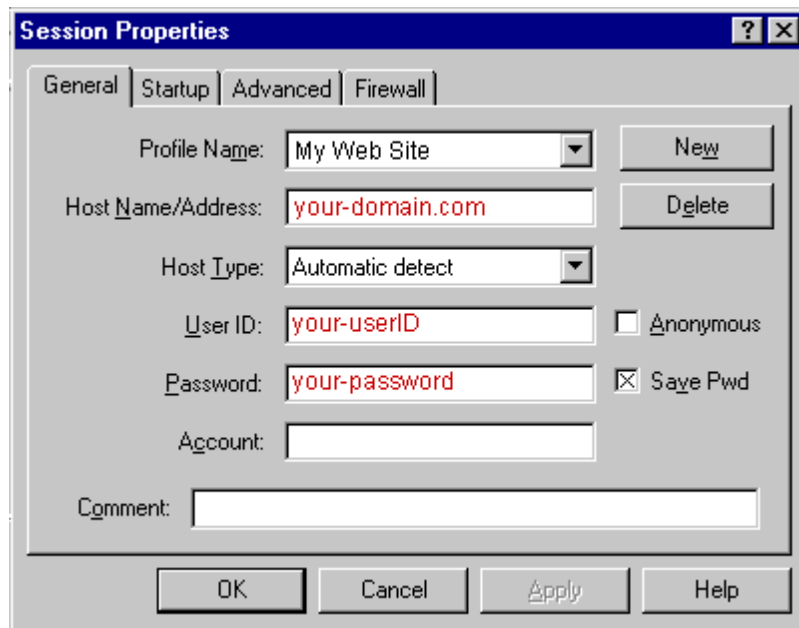


Fig.1

Be sure to select "Auto detect" for the Host Type. (see Fig.1) It is best to select "Save Password" and "Auto Save Config" to maintain these settings for future use. All other fields can be left blank. You are now ready to connect to the web server. Click "Ok" to continue.

How to Transfer Files

When you connect to the web server, you will connect directly to the root ("home") directory of your account. WS_FTP will display a split screen where files on the left-hand side are within your own computer. (see Fig.2) You will see several folders on the right-hand side such as bin, cgi-local, dev, etc, lib, and stats which are landmarks suggesting a successful connection to your web site.

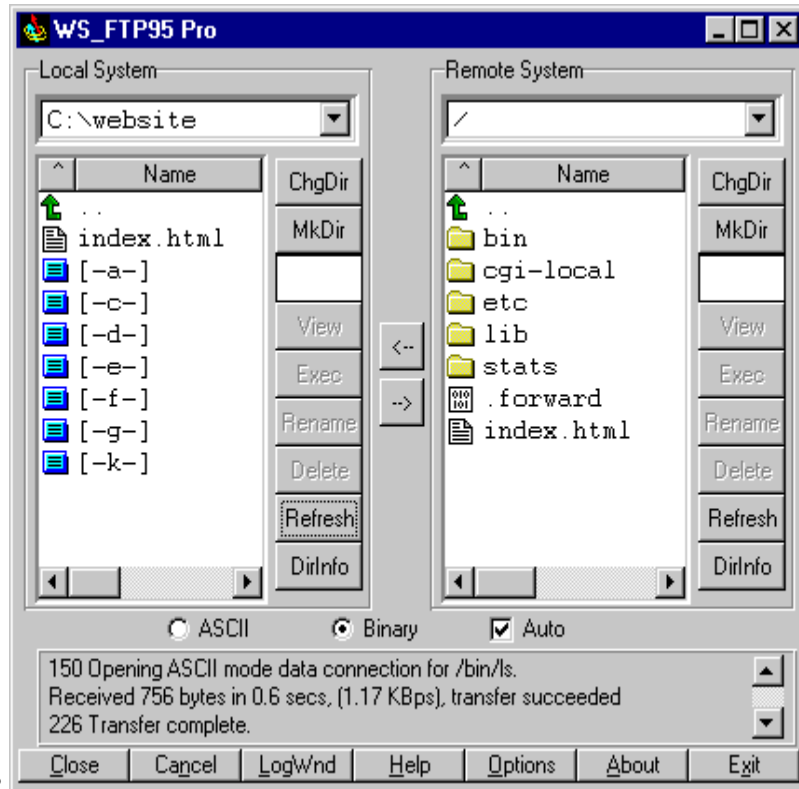


Fig.2

You can transfer files directly to the root level and/or create subdirectories. The only system directory that you may need to use is cgi-local (equivalent to cgi-bin on NT) which is where you should upload your own custom CGI scripts.

NT Plan: In order to access the web directories of an NT account via FTP you must change to the **/webroot** directory. Files placed in the root directory of the FTP site will not be available via the web. WS_FTP users can set the "Initial Directories: Remote Host" option in their session profile to /webroot to enter that directory automatically.