

Metro Ethernet Solutions

The elements of business.™

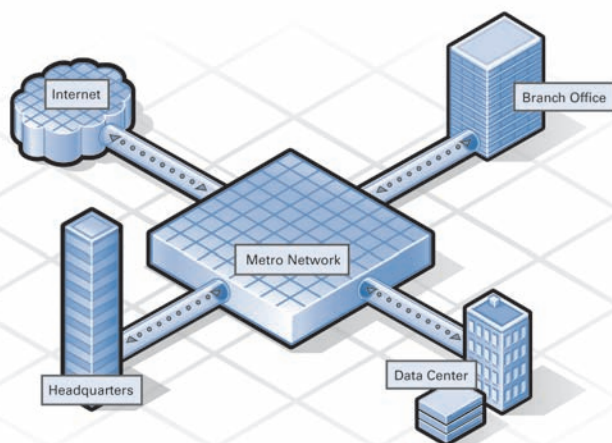
ETHERNET CONNECTIVITY for Business

Boundless and scalable bandwidth capability, service level agreements (SLAs), and a reliable fiber-optic network infrastructure – these are necessities for enterprise organizations that are deploying data-centric enterprise applications, such as video, distance learning, videoconferencing, and CRM, as well as mainstream servers and applications that enable block-based storage traffic for data backup.

That's why Time Warner Cable Business Class offers Metro Ethernet Solutions designed specifically for enterprise organizations that need ample bandwidth across the network. This suite of optional network configurations includes point-to-point connectivity, point-to-multipoint connectivity and multipoint connectivity to meet the unique – and changing – requirements of your business. Increase productivity with LAN-to-LAN collaborative applications and enhance computing connectivity at various remote offices. In addition, because these options utilize the Layer 2 Ethernet protocol, you can leverage your existing IT expertise and eliminate the need for training or additional technical resources.

Time Warner Cable Business Class offers a comprehensive suite of data, security, and video communications solutions. Contact your local Time Warner Cable office for a consultation on how to best meet your business communications requirements.

- > **Point-to-Point Connectivity**
Dedicated interconnectivity between two facilities
- > **Point-to-Multipoint Connectivity**
High-capacity connections between one site and multiple additional sites
- > **Multipoint Connectivity**
High-bandwidth connections between multiple sites
- > **Teleworker Aggregation**
Reliable data connectivity for teleworkers into corporate resources
- > **SLAs**
Ensuring high performance with advanced network monitoring tools





Metro Ethernet Solutions

The elements of business.™

Benefits

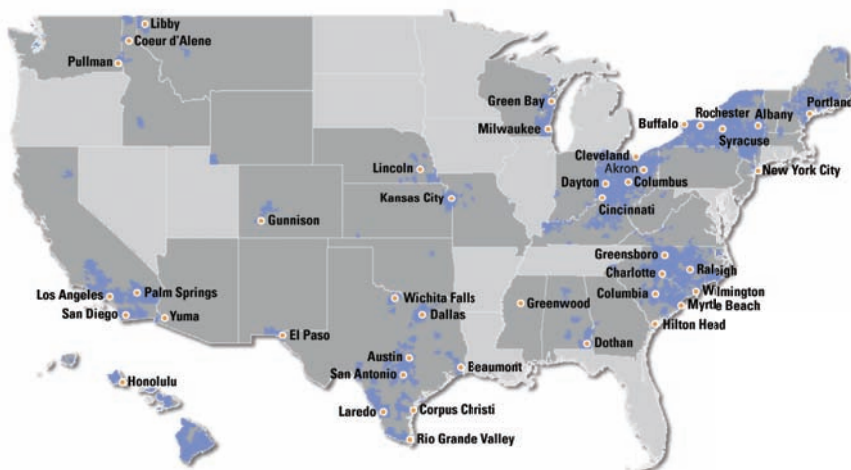


- > Time Warner Cable metro fiber optic networks and regional rings enable superior performance
- > Local, dedicated account management for a single point of contact
- > Layer 2 transmission and performance advantages with Ethernet services
- > Scalable bandwidth up to 10 Gbps*
- > Lower your total cost of ownership (TCO) by reducing capital outlay on routers, switches and hardware
- > Flexible pricing (flat rate or usage based)
- > Simple customer management of proven Ethernet technology

Features

- > Metro Ethernet communications services conforming to industry IEEE 802.3 standards
- > Scalable bandwidth and minimal disruption for businesses that anticipate increased bandwidth needs
- > Robust SLAs for availability, latency/repair, packet loss and mean-time-to-repair (MTTR)
- > End-to-end network monitoring to ensure reliable operations
- > Performance monitoring tools to validate the uptime of mission critical operations
- > Dedicated customer support 24 x 7 for any questions

National Presence



Services are not necessarily available throughout the shaded areas. Services are available only in the indicated metropolitan areas of the shaded states.

* Not all configurations available in all markets. Please contact a Time Warner Cable Account Representative for a consultation.